

# Xtreme Duty Polypropylene Hand Nozzle

**DM-100HFR • for Hand Dispensing by Pump or Gravity Feed**

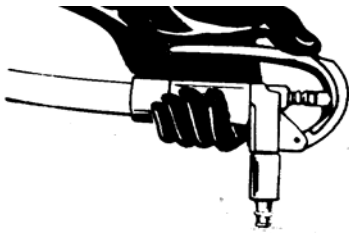
## Benefits & Features...

- ⇒ All polypropylene/Viton wetted parts with external trigger spring
- ⇒ Fiber reinforced polypropylene for heavy duty applications
- ⇒ Extended reach with transfer tube or hose clamped onto ½" spout
- ⇒ Careful fluid control for increased operator & environmental safety
- ⇒ Helps prevent spillage during critical liquid transfer operations
- ⇒ Simplifies liquid filling or repacking into smaller containers
- ⇒ Excellent for all liquids chemically compatible with polypropylene



DM-100HFR Nozzle

## DM-100HFR Nozzle Heavy Duty, Manual Shut-off, Precision Control, Fiberglass Reinforced



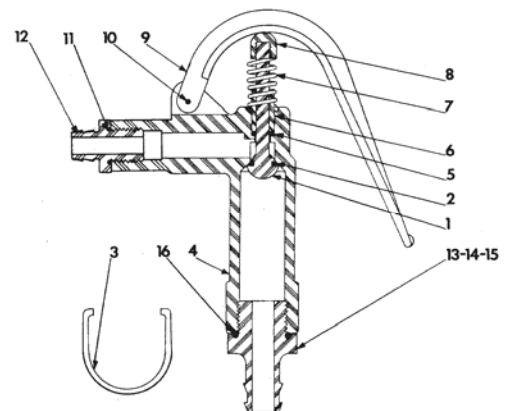
Materials of Construction: Polypropylene wetted parts, Viton seals, external SS spring  
 Dispensing Flow Rate: 0 – 25 GPM, (0 – 95 litres)  
 Pressure Range: 0 – 40 PSI, (0 – 276 kPa)  
 Temperature Range: 15° to 155°F (-10° to 68°C)  
 Hose Barb Assemblies: Choice of ½", ¾", or 1" hose barbs  
**Optional Components:** DM-100HFR/SKV, O-ring maintenance kit, Viton DM-100HFR/TSK, Nozzle trigger service kit with o-rings DM-85CDH/CL, polypropylene flexible transfer hose, ¾" ID

**Nozzle Spout Dims:** Spout ID, 0.375", Spout OD, 0.50", Spout Barb-rim OD, 0.56", Spout Length, 0.80"

**Ordering Note:** Specify hose-barb size when ordering, Part # Extension: ½"=12, ¾"=34, or 1"=100

### Parts List

ITEM	NAME	MATERIAL	PART NUMBER
1	Shaft	GFPY	850P100-571
2	O-Ring	Viton	590P2109-830
3	Clip	Stainless Steel	130P104-680
4	Body	GFPY	060P101-571
5	O-Ring	Viton	590P236118-830
6	Shaft Insert	GFPY	440P100-571
7	Spring	Stainless Steel	810P716101-680
8	Cap Nut	GFPY	120P101-571
9	Handle	GFPY	391P100-571
10	Pin	Stainless Steel	682P3321-680
11	O-Ring	Viton	590P2114-830
12	1/2" Hose Adapter	GFPY	390P0304-571
13	1/2" Hose Adapter	GFPY	390P0604-571
14	3/4" Hose Adapter	GFPY	390P0606-571
15	1" ID Hose Adapter	GFPY	390P061-571
16	O-Ring	Viton	590P2120-830



Consult Distributor or DRUM-MATES® for parts prices. Always specify Model No., Part Name and Part No. when ordering.



DRUM-MATES® equipment assemblies are provided as separate components each sold on a separate basis. Ask for literature on DRUM-MATES® drum & tote mixers, drum tumblers, drum & tote pumps & hand nozzles. DRUM-MATES® Inc., Mixer & Pump Div., Tel: 1-800-621-3786 and 609-261-1033, Fax: 609-261-1034

# Processing Solutions from DRUM-MATES

## Heating Solutions

Drum, Tote & Cabinet Heaters



Drum Base Heater



Full Wrap



Immersion



Full Wrap, Tote



Bottom Pad, Tote

## Mixing Solutions

• Hand, Pneumatic, Electric, Drum & Tote Mixers, Drum Rotators and Rollers



Bung Entry



Open Drum Mixer



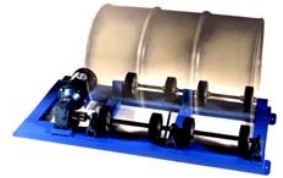
Top Rail Mount Tote Mixer



Lid Mount



Self-Loading Drum Rotator



Drum Roller

## Pumping Solutions

• Hand Pumps, Pneumatic, Electric, Double Diaphragm, Metering Pumps



Drum Pump Metering



Rotary, Hand



Reciprocating



Electric & Air Op.



Air Op. Economy Pump

## Pouring Solutions

• Hand Dispensing Nozzles, Spouts & Drum Drainers



Teflon Hand Nozzle



Stainless, TFE



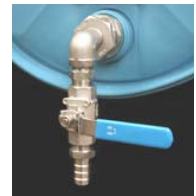
Aluminum, TFE



Polypropylene



Polypropylene, Stainless



Stainless Drainer

## Adapter Solutions

• Bung Hole Adapters, ThreadConverters™, TubeGuards™, SplashGuards™



SplashGuard™



ThreadConverter™



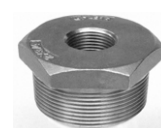
ThreadConverter™



ThreadGuard™



TubeGuard™



ThreadReducer™



Bung Assembly



This Line Card depicts a small part of our product range - please ask us about your requirement!

DRUM-MATES® Inc., Process Equipment Div., Email: [Inquiries@drummates.com](mailto:Inquiries@drummates.com), Tel: 800-621-3786, Tel: 609-261-1033, Fax: 609-261-1034